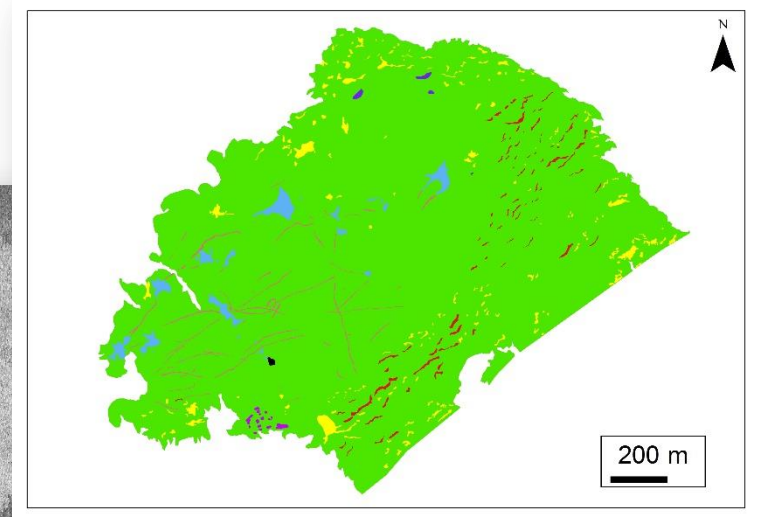
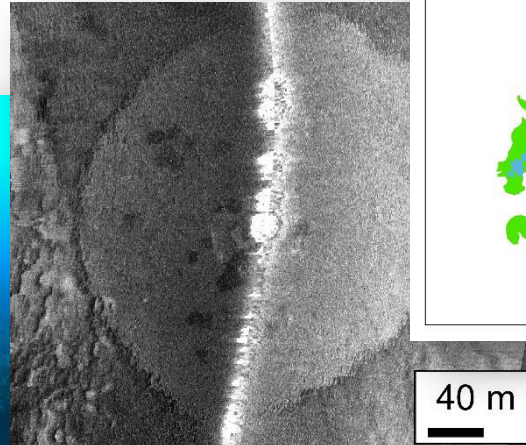
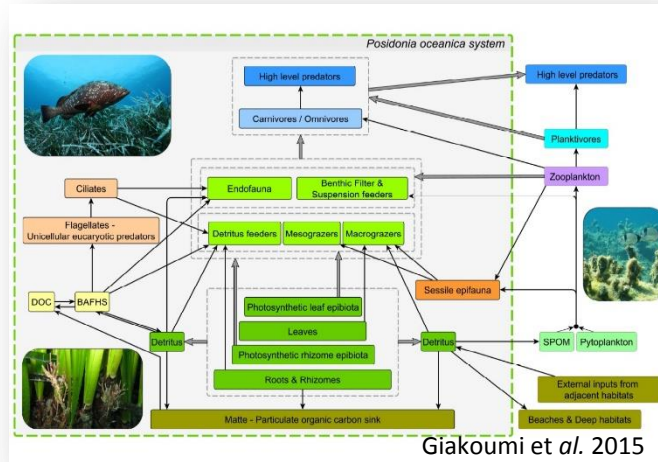


# Patch types in *Posidonia oceanica* meadows around Corsica How can we use them in seascape ecology?



Sardinia, Italy - May 2015

Arnaud Abadie, Marina Bonacorsi, Sylvie Gobert, Pierre Lejeune,  
Gérard Pergent, Christine Pergent-Martini



**Assessment of conservation state for managing purpose**

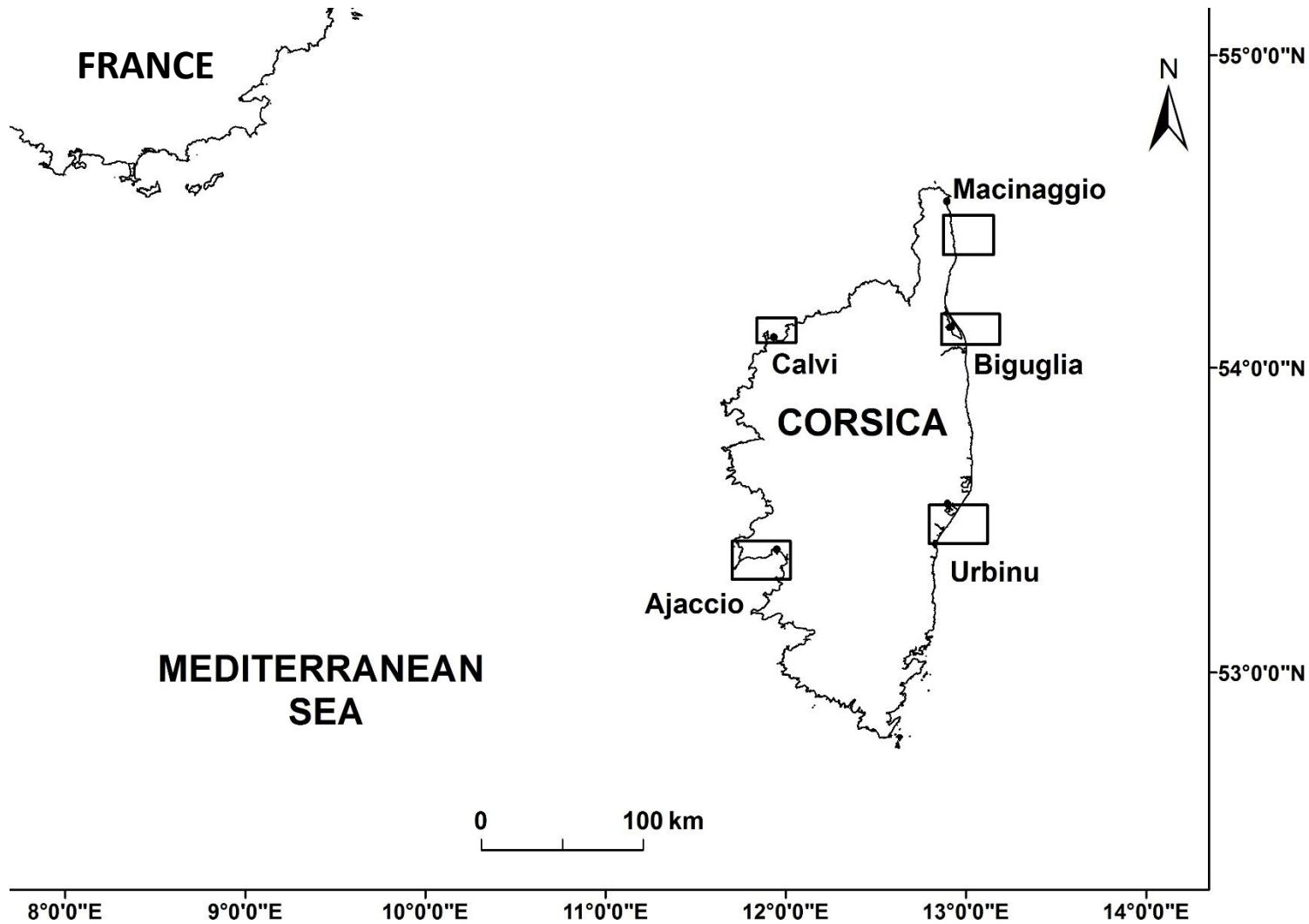
**Whole ecosystem functioning**

**Meadows structure**

**Large scale studies of *Posidonia oceanica* meadows functioning => seascape ecology**

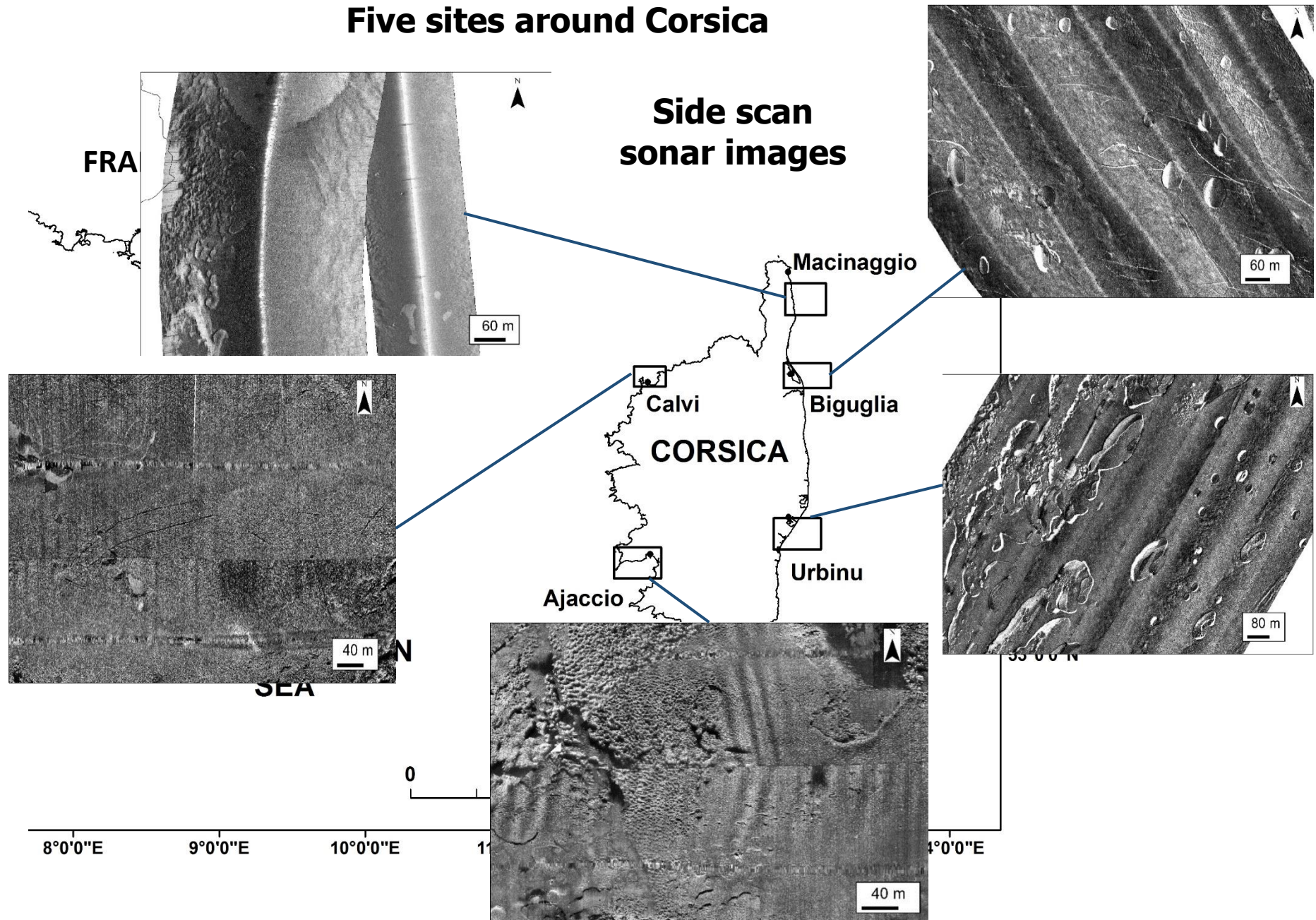


## Five sites around Corsica





### Five sites around Corsica





## Continuous meadow

Meadow matrix

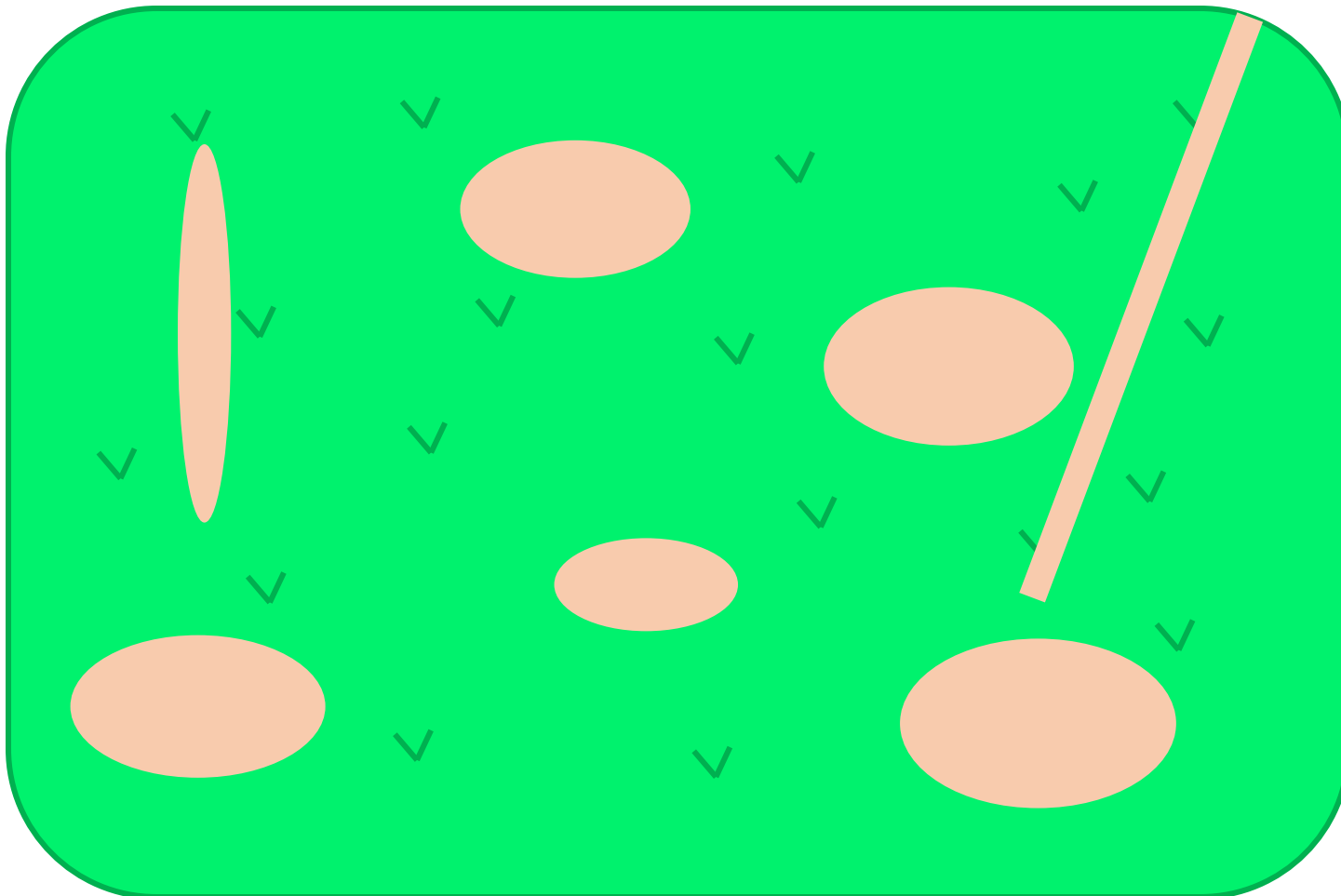


**No patches**

**No natural or  
anthropogenic  
impact**



## Heterogeneous meadow



**Multiple  
patches of  
different sizes  
and shapes  
forming  
various  
habitats**



## Heterogeneous meadow



**Multiple  
patches of  
different  
origins:  
natural  
vs  
anthropogenic**



## Heterogeneous meadow

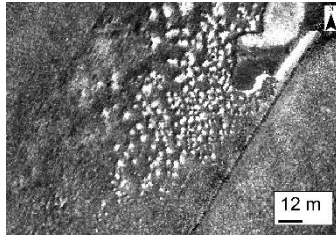


Multiple  
patches of  
various  
types

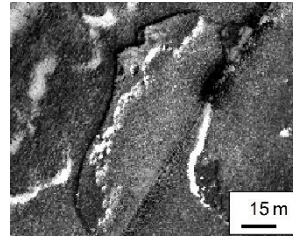


# 11 types (or classes) of patch identified

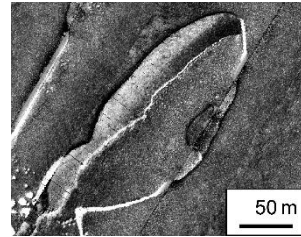
## 5 natural



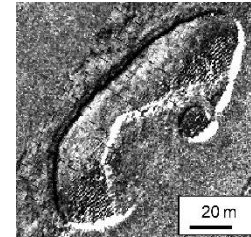
Small sand patch



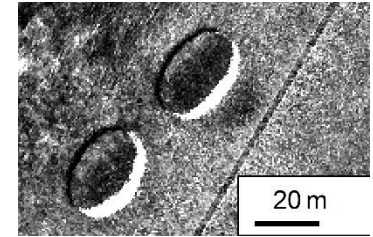
Sand corridor



Large sand patch

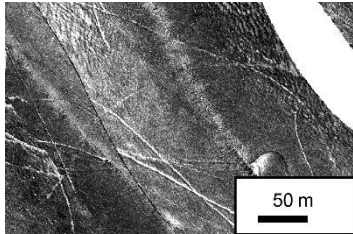


Colonized patch

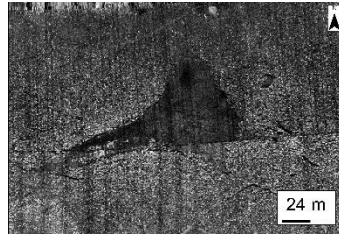


Ovoid patch

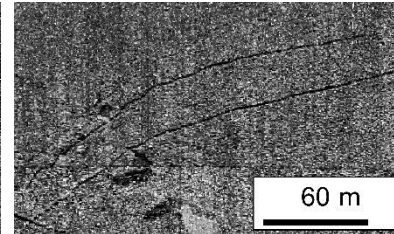
## 5 anthropogenic



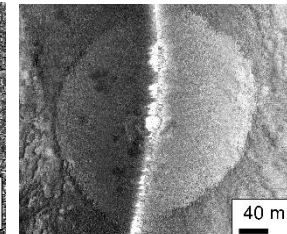
Trawling tracks



Anchoring patch



Anchoring track

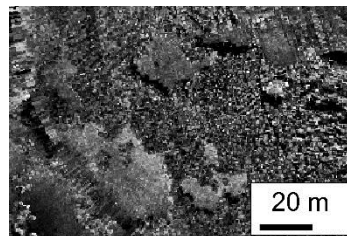


Bomb impact



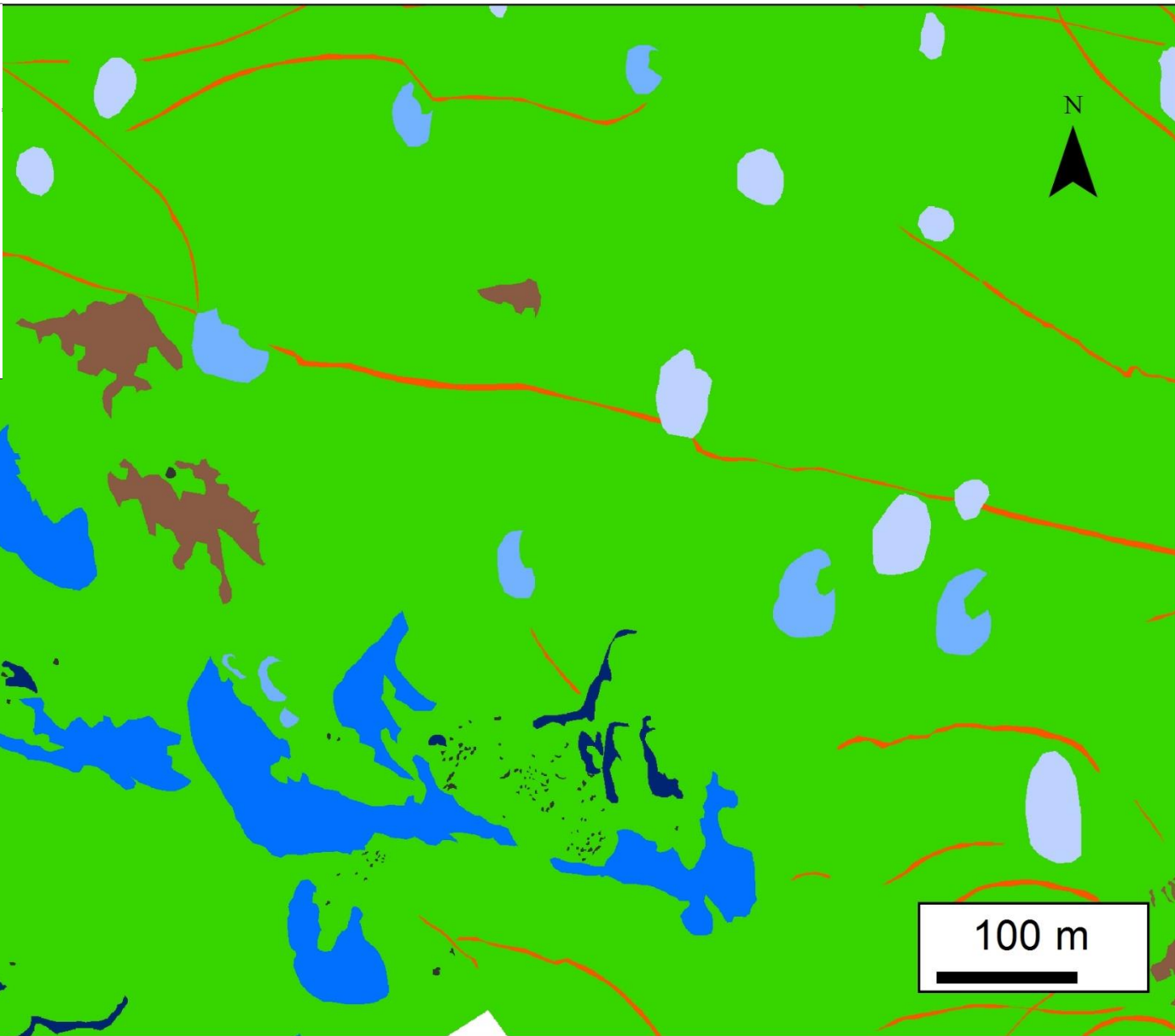
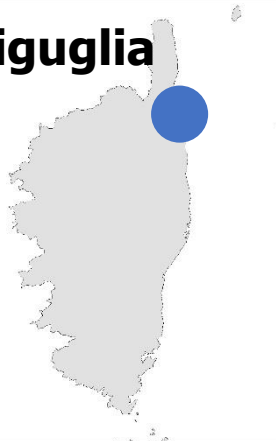
Fish farm patch

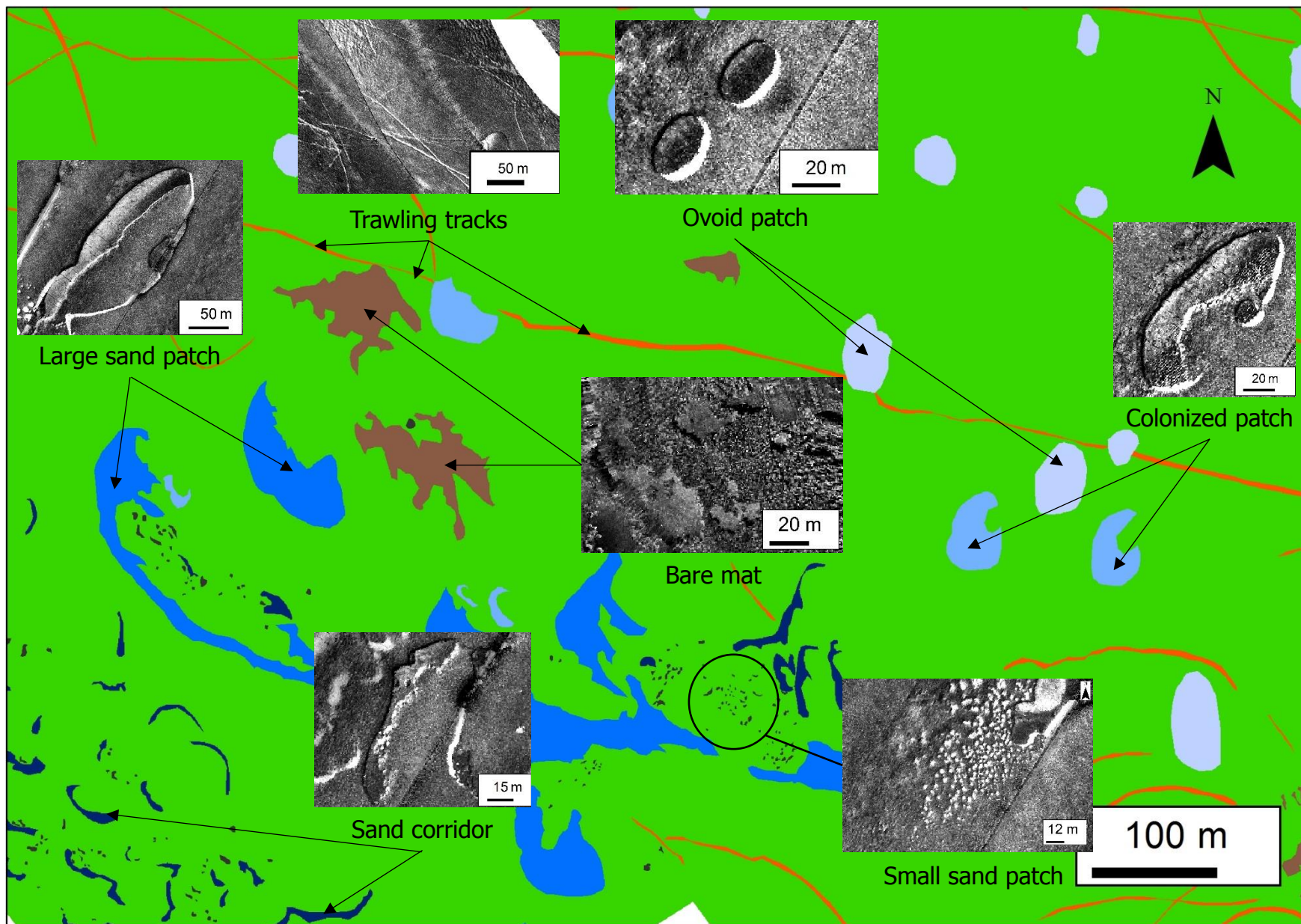
## 1 can be of both origins



Bare mat

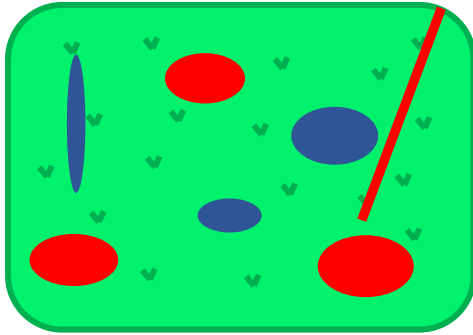
# Biguglia





## Seascape analysis

### natural vs anthropogenic



### A simple area index

$$PaSI = \frac{S_{NP}}{S_{NP} + S_{AP}}$$

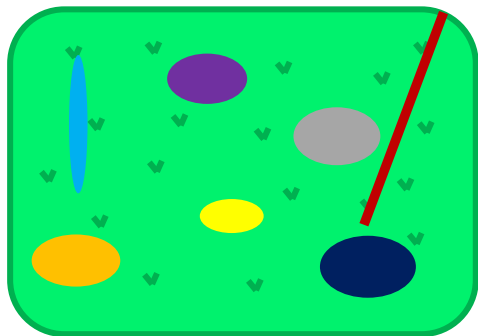
$S_{NP}$ : surface of natural patches

$S_{AP}$ : surface of anthropogenic patches

PaSI Value	Description	Color	Site
0.801 - 1	High natural influence on the meadow patchiness	Blue	Urbinu
0.601 - 0.800	Major natural influence on the meadow patchiness	Green	
0.401 - 0.600	Moderate anthropogenic influence on the meadow patchiness	Yellow	Ajaccio, South Macinaggio, Biguglia
0.201 - 0.400	Major anthropogenic influence on the meadow patchiness	Orange	Calvi
0 - 0.200	High anthropogenic influence on the meadow patchiness	Red	

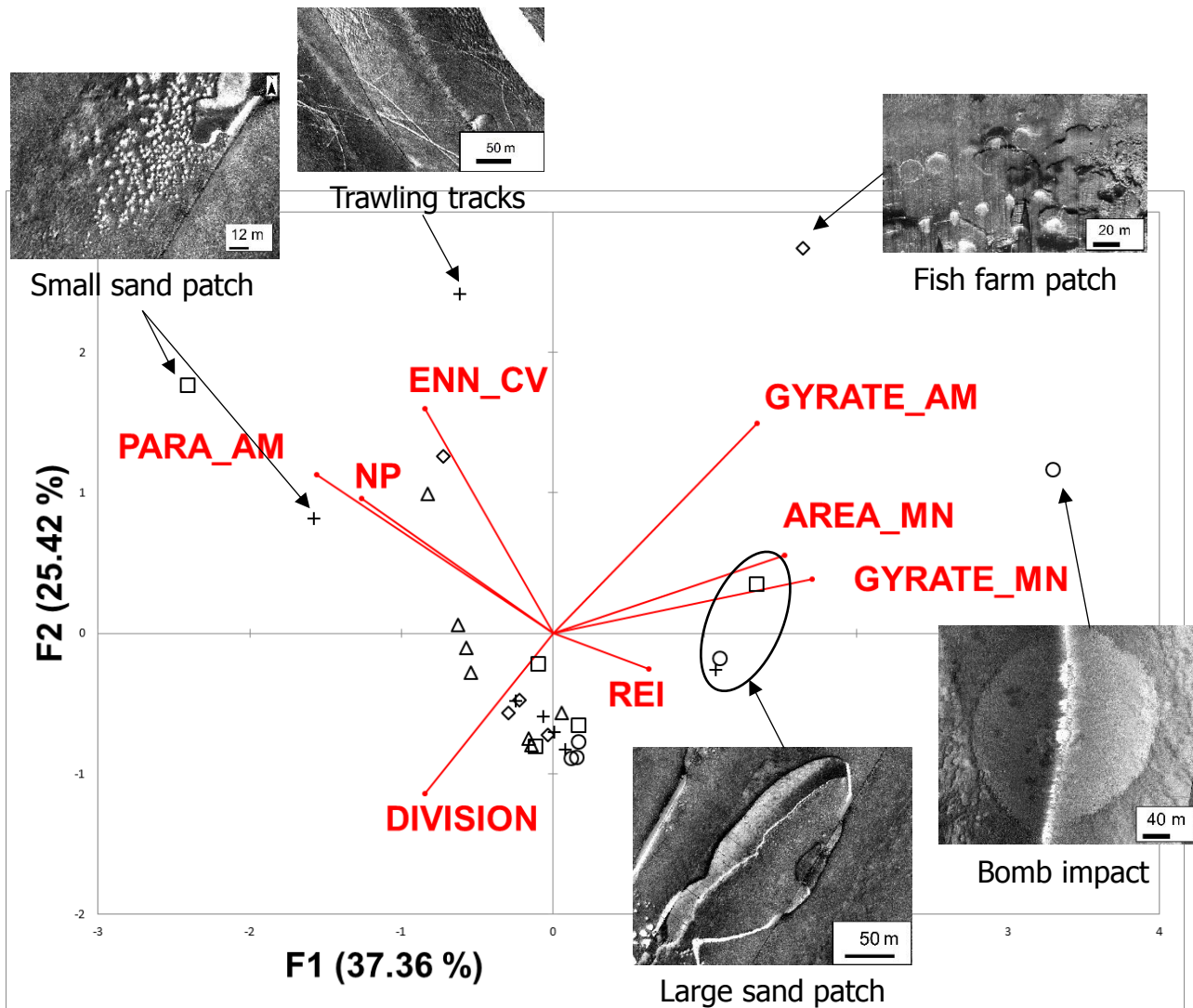
# Seascape analysis

## patch types



Several patch classes discriminated by their characteristics

## Seven landscape metrics + a water movement index (REI) used at patch class level



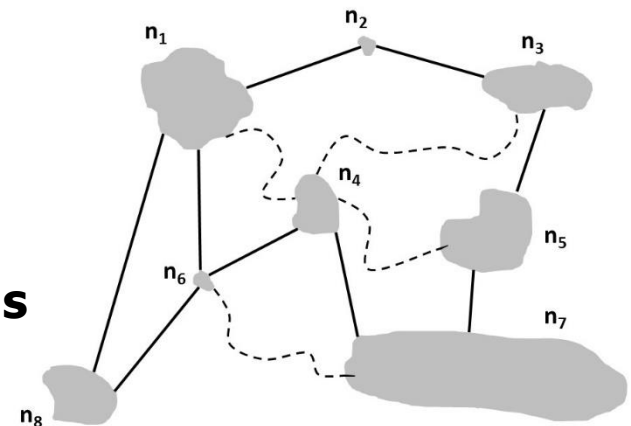
## Take-home message

- **11 patch classes** recognizable with sonar images
- *P. oceanica* seascapes **structured by natural and anthropogenic patches**
- A great potential use of patch classes characteristics to compute new **conservation indices**



## Going further

- Combine **structure** and **function** at large scale
- **3D** maps and analyses of seascapes
- Use of the **most recent** landscape ecology tools (e.g. landscape graphs)





# Thanks for your attention!

